



February Feature
Bohemian Rhapsody

Nominated for 5 Academy Awards, including Best Picture and Best Actor in a Leading Role, Bohemian Rhapsody is the story of the legendary rock Band Queen and lead singer Freddie Mercury, leading up to their famous performance at Live Aid in 1985.

Starring: Rami Malek, Lucy Boynton, Mike Myers, Gwilym Lee



Screening Dates/Times
February 19 - 5:15pm
February 20 - 12:00pm
February 21 - 5:15pm

Theater is located on the 23rd floor, south

National Wear Red Day®
Friday, 02 01 19
American Heart Association
Go Red for women



February is National Heart Month
300 South Riverside Plaza will **Go RED!**
WEAR RED 2/1 to raise awareness
Share **#WearRedDay** on Social Media

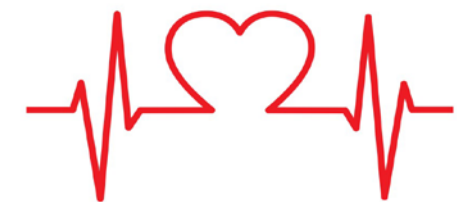
Visit WearRedDAY.org for more information.

Heart Attack Symptoms:

- Chest Discomfort - pain/pressure/squeezing/fullness
- Shortness of Breath
- Pain in Chin, arm, jaw, or back
- cold sweat, nausea, lightheadedness

Spot a Stroke F.A.S.T.

- F** - Face droop/difficulty smiling
- A** - Arm weakness/numbness
- S** - Speech change/slurring
- T** - Time to call 9-1-1



Missed the Blood Drive?

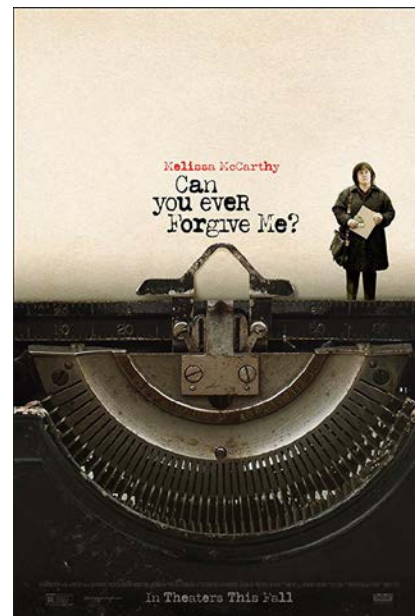
Make an appointment through redcrossblood.org
or call 1-800-RED-CROSS



March Movie of the Month - Oscar Edition

Follow us on Facebook at facebook.com/300srp & vote for the next Movie of the Month!

The title with the most votes will play in the theater on the 23rd floor in March. Check the March newsletter for the winner and show times. The deadline to vote is February 28th at 4:30pm!



South Riverside Building
300 South Riverside Plaza
Chicago, IL 60606
(312) 676-2500
300southriversideplaza.com

Rachel Cuyler,
General Manager

Allie Borrego,
Assistant General Manager

Lou Ricciardi,
Construction Manager

Christine Mild,
Property Administrator

Vernon English,
Director of Security

John Gray,
Chief Engineer

BLOOD DRIVE RESULTS

Thank you to all who donated during the American Red Cross Blood Drive on January, 23rd.
Winter months are critical!
We tripled our participation from our last drive!
The event collected 16 units, including 8 from first time donors. Every unit can save 3 lives, therefore up to 48 lives are impacted!
Thank you 300 South Riverside Tenants for making a contribution and supporting this community program!

American Red Cross

Lost & Found

Lost item? Check the Lost & Found box at Suite 1980, South in Management office.

Did you know this newsletter is online? <https://300southriversideplaza.com/portal/documents/>



EXTREME WINTER WEATHER HITS CHICAGO

HOW DID 300 SOUTH RIVERSIDE PREPARE FOR EXTREME WEATHER?

- By operating building heat 24/7 and maintaining chilled and hot water circulating pumps and coil valves for full, uninterrupted circulation.
- Engineering staff has been increased to perform additional building and equipment rounds “around the clock”.
- Security and Janitorial are performing additional exterior building rounds for falling ice and/or issues with surrounding property.
- Lobby revolving doors have been kept unlocked until 8 PM to avoid cold air infiltration. Security continues to discourage “push door” use unless completely necessary.
- Installation of remote sensors in lobby ceilings to safely monitor temperatures. You may have noticed opened access panels in lobby ceiling, this is to better circulate warm air.
- Engineers drained down all dry pipe systems prior to temperature drop and set outside air (OA) dampers to the minimum position.
- Engineers are also monitoring the Building Automation System (BAS) supply and return temperatures for any issues or unordinary readings.
- Lastly, we have confirmed adequate fuel for generator on hand and readily available if needed.

WINTER INFO

<p>Blizzard Warning</p> <p>Severe winter weather is expected within the next 12 to 36 hours or is occurring – including whiteout conditions. Do not travel.</p> <p>take action.</p>	<p>Winter Storm Warning</p> <p>Dangerous winter weather is expected within the next 12 to 36 hours or is occurring. Considerable travel problems are expected.</p> <p>take action.</p>	<p>Winter Weather Advisory</p> <p>Potentially dangerous winter weather is expected within the next 12 to 36 hours or is occurring. Travel difficulties are expected.</p> <p>be aware.</p>
---	--	---



WINTER STORM JAYDEN 411

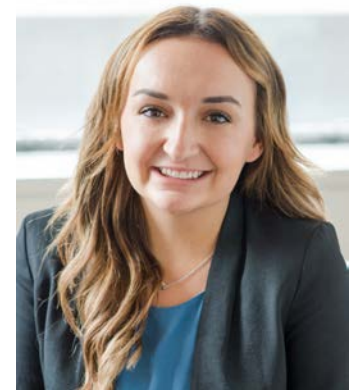
- It was colder in Chicago on 1/30/19 than the Arctic Circle, Siberia, Mount Everest, and parts of planet Mars.
- Over 4,000 flights were canceled, 14,867 flight delays
- Chicago recorded -23, just slightly above the record of -27, from 1985
- This storm's coldest reported temp was -56 in Cotton, MN
- Cancellations were numerous, including: Chicago Public Schools, libraries, courts, Navy Pier, the Lincoln Park Zoo, Lou Malnati’s delivery, Amtrak, Metra Electric, US Postal Service, Museum of Science and Industry, Field Museum, Adler Panetarium, Art Institute of Chicago, Northwestern University, DePaul, University of Chicago, UIC, local breweries (Half Acre, Revolution, and Goose Island), Trader Joe’s, “Hamilton” performances, and much more.

Virtual Concierge at 300 S. Riverside Plaza



Need a hotel? Theatre Tickets? Spa and Dinner Reservations? Staff Happy Hour Event? Meeting Planning?
Corporate Concierge will arrange it for you!

Meet **Taylor**, our Corporate Concierge Specialist.
 Email: concierge@corporateconcierge.com



They create seamless service solutions and engaging entertainment experiences to enhance daily life for you and your employees. They can make your day easier and your experience at 300 S. Riverside Plaza more enjoyable!