



300 South Riverside is proud to follow BOMA's Illuminate Chicago Program, an initiative that raises awareness for causes, organizations and local initiatives.

We will illuminate the building's North Entry with the below colors this month!

National Migraine and Headache Awareness Month  
June 1st - June 8th  
PURPLE



PRIDE MONTH  
June 9th - June 16th  
RAINBOW

Juneteenth June 17th - June 19th  
RED

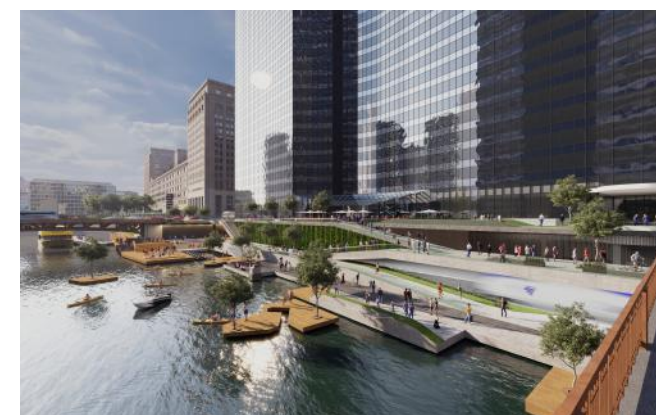


National Safety Month  
June 21st - June 27th  
GREEN

## Riverwalk @ 300SRP Love Letter To Chicago!

A local architecture firm, DMAC Architecture, imagines a Riverwalk Expansion with 300 South Riverside Plaza as it's muse.

See the full article inside this edition!



HAPPY  
Father's  
DAY



Treat your Father to a round of golf. 300SRP has partnered with Ravisloe Country Club to provide a 15% Green Fee discount anytime Monday-Thursday and Friday-Sunday after 2:00 pm for the month of June. Please email/call Steve Dell (sdell@ravisloe.com 708-798-5600) or Kevin Stoffle (kstoffle@ravisloe.com) to ensure the discount and make your reservation.

*\*Advance Reservations Required.*



Don't Forget: Gift Cards are **always** available at Little Toasted.



# Get To Know 300 Staff

**Flor Sigaran**  
**BuildingHub Concierge**

**What services can you provide to the Tenants of 300SRP?**

I can assist with hospitality, tourism, and amenity requests. Such as dining reservations, attraction suggestions, recommending florists, and more.

**When you aren't working what do you enjoy doing?**

When I'm not working, I enjoy visiting museums and spending time with my family!

**What is the best piece of advice you have ever been given?**

The best advice I have ever gotten is "Be kind to yourself".

**What is your favorite thing about working at 300SRP?**

The East River Lounge seating and the West Plaza are great places to recharge with some sun and fresh air.



BuildingHub

Email: flor@buildinghub.io  
concierge@buildinghub.io  
Phone: (312) 900- 8188

## Ice Cream Social: Sundae Bar

We invite tenants to join us for a sweet treat! In partnership with Capannari Ice Cream.

Your choice of Vanilla, Chocolate, & Black Raspberry Chip. Prepackaged toppings include: Sprinkles, Oreos, M&Ms, and Peanuts

**Tuesday, June 15th**

**Location: East River Lounge**

**Time: 12:00pm - 2:00pm**



### Area Events: June!

**Tuesday on the Terrace Music Series:** Starting June 1st, every Tuesday at 5:30pm, the Museum of Contemporary Art is having music on their patio.

**Old Town Art Fair (1763 N. North Park Ave):** June 12th - June 13th, the Old Town Art Fair takes over the Old Town Triangle Historic District and features work from hundreds of artists.

**The Obama Portraits:** June 18th - August 15th, The Art Institute of Chicago will be showing the Obama Portraits.

**Pride in the Park:** June 26th - June 27th, Celebrate Pride in Grant Park.



## SAVE THE DATE

Mark your calendars!

July 15TH, 2021

3:00pm - 5:00pm

Summer Event: Under the Big Top @ 300SRP!

Please join us in the West Plaza for Drinks, Food, Games, and Prizes. More details to come!



Facebook.com/300SRP

Stay in the know with all of the latest building updates.



@300SRIVERSIDE

Follow us on: Facebook, Instagram, Twitter, and BuildingHub.



@300SRIVERSIDE



https://hub.300southriversideplaza.com/hub

# Architects envision new intermodal riverwalk for Chicago River's south branch

Amtrak wants to build new egress stairs near Union Station. A local architecture firm sees the project as an opportunity to create a new "front door" to the city.

MAY 19, 2021 BY: JAY KOZIARZ



Chicago-area design firm [DMAC Architecture](#) has revealed an ambitious vision for bringing new open space and a riverwalk to the south branch of the Chicago River.

Located just east of the office building at [300 S. Riverside Plaza](#), the concept was created in response to Amtrak's plan to reactivate an unused platform serving nearby Union Station and add egress stairs up to street level. DMAC, working with property owner [Third Millennium Group](#), saw the situation as a chance to create something special.

"We felt there is a solution for egress that can be satisfied in a much better way," Dwayne MacEwen, founder and principal at DMAC, told Urbanize. "You can't make this the 'back door' to Union Station. It should be the front door to the city and river. Chicago exists where it does because of the river. To not embrace it seemed like a missed opportunity."



DMAC Architecture

The concept treats the planned stairs as a starting point to extend a perimeter walkway around 300 S. Riverside and potentially down to the waterfront with a series of ramps. The upper terrace is envisioned as an outdoor dining area, while the lower levels serve as public gathering spaces and piers that could be used by kayakers, tour boats, and floating "tree taxi" islands.

The walkways would allow train passengers to emerge from Union Station at river level, while an acoustic "veil" and baffle in front of the platforms would help absorb sound. A proposed pedestrian connection would pass beneath the Van Buren Street Bridge and provide access to the redeveloped [Old Post Office](#) property.

The landscaping takes inspiration from the location's existing features, which include native vegetation growing on the [sea caves](#)—a series of sunken waterfront tunnels

leftover when engineers reversed the flow of the Chicago River in 1900. The concept also takes advantage of intermodal connectivity at the site, which is served by trains, buses, boats, bicycles, and even helipads on the roof of 300 S. Riverside.



DMAC Architecture

Described by Third Millennium Group managing director Adam Mizrachi as a "love letter to Chicago," the so-called Riverwalk@300SRP plan is still very much in the concept phase. Its designers hope renderings of the project can start a conversation about how to make it a reality.

"This is a 'love letter,' so we're not at the altar yet," said MacEwen. "Developers often look at a project from the standpoint of how it impacts the bottom line, but this is something that the city should want to do."

"It's ambitious, we know," added the architect. "But there's also a sense that if phase one is adding the egress stairs from the train platform, let's do it in a way that still allows [the riverwalk] to happen later."

